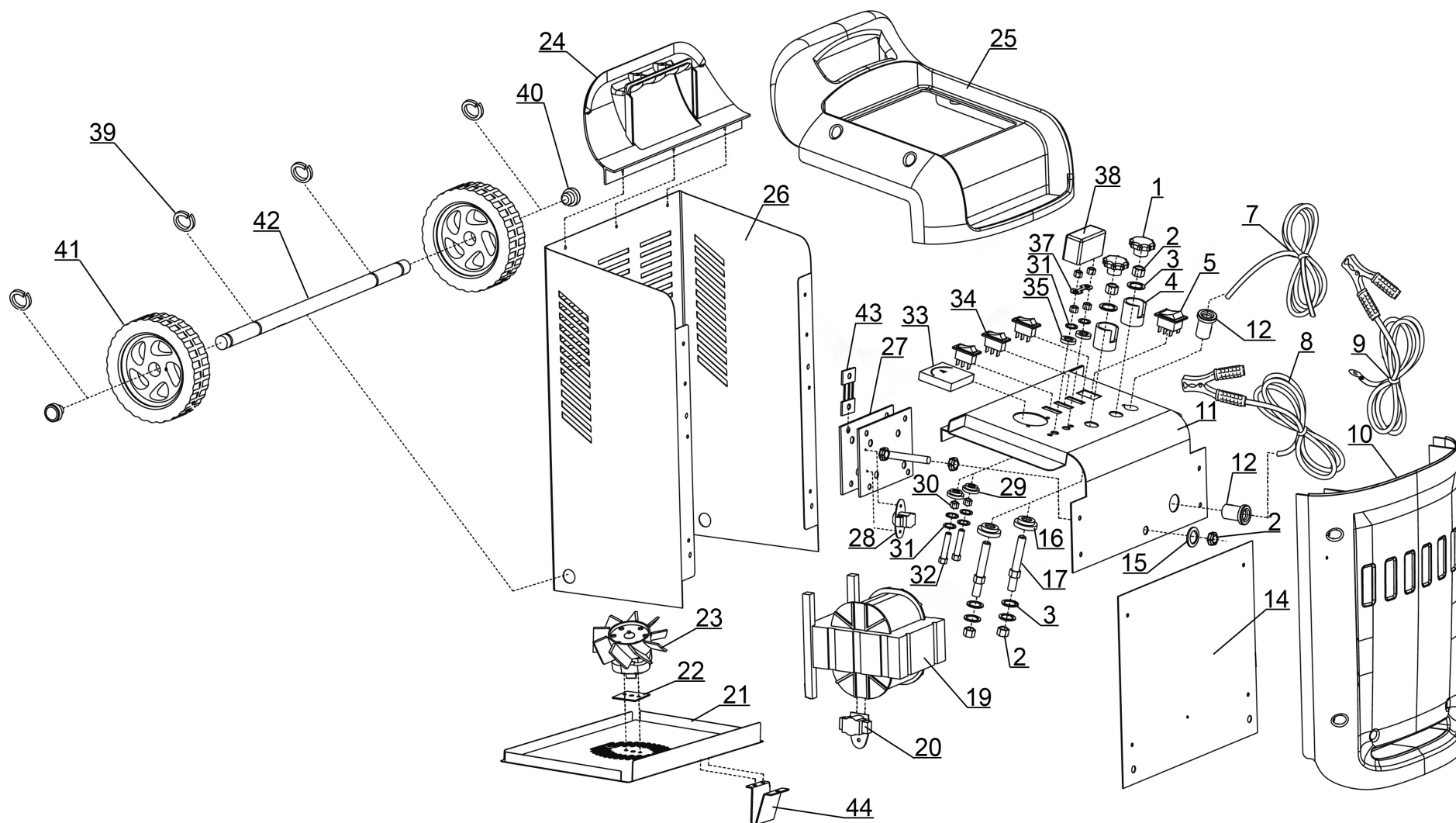




TM

Parts Information:
12/24V Starter/Charger 420/60Amp 230V
Model No: START420



NOTE: It is our policy to continually improve products and as such we reserve the right to alter data, specifications and component parts without prior notice.

There may be alternative versions of this product, please contact us should you require this information.

IMPORTANT: No liability is accepted for incorrect use of product. Spare parts must be fitted by a competent person

WARRANTY: Guarantee is 12 months from purchase date, proof of which will be required for any claim.

Sealey Group, Kempson Way, Suffolk Business Park, Bury St Edmunds, Suffolk. IP32 7AR



01284 757500



sales@sealey.co.uk



www.sealey.co.uk



TM

Parts Information: 12/24V Starter/Charger 420/60Amp 230V Model No: START420

Item	Part No.	Description	Qty
1	START800.01	Knob, Plastic Ø38mm, M6 Threaded (F)	2
2	SN8.S	Steel Nut M8	6
3	FWM8.S	Flat Washer M8	6
4	START800.04	Terminal Protection Cover	2
5	START420.05	Switch, Power Rocker (Green) 30A 250V	1
7	START420.07	Power Cord	1
8	START420.08	Cable, Negative (c/w Clamp)	1
9	START660.09	Cable, Positive (c/w Clamp)	1
10	START420.10	Plastic Panel, Front	1
11	START420.11	Top Panel	1
12	START660.12	Cable Grip	2
14	START420.14	Cover Panel	1
15	START800.15	Serrated Washer M8	1
16	START800.16	Insulating Washer	2
17	START800.17	Terminal Bolt M8	2
19	START420.19	Transformer	1
20	START420.20	Thermostat for Transformer	1
21	START420.21	Bottom Panel	1
22	START420.22	Insulating Plate	1
23	START420.23	Fan (c/w Motor)	1
24	START800.24	Handle Support Panel	1

Item	Part No.	Description	Qty
25	START800.25	Top Plastic Cover	1
26	START420.26	Back Panel	1
27	START420.27	Rectifier	1
28	START420.28	Thermostat for Rectifier	1
29	START800.29	Insulating Washer A	2
30	SN6.S	Steel Nut M6	2
31	FWM6.S	Flat Washer M6	6
32	SS635.S	Hex Head Set Screw M6 x 35mm	2
33	START420.33	Ammeter	1
34	START240.12	Rocker Switch 20A 250V	3
35	START800.35	Insulating Washer B	2
37	START360.F	Fuse 110Amp (Please See Catalogue)	1
--	START360.F10	Fuse 110Amp (Pack of 10)(Please See Catalogue)	--
38	START800.38	Fuse Box	1
39	SWM12.S	Spring Washer M12	4
40	START800.40	Axle Cap	2
41	START800.41	Wheel, Fixed, Plastic, (c/w Bearings) (Ø147 x 43 x Ø12mm)	2
42	START800.42	Wheel Axle (460mm x Ø12mm)	1
43	START660.43	Fusible Link	1
44	START800.44	Foot	1

NOTE: It is our policy to continually improve products and as such we reserve the right to alter data, specifications and component parts without prior notice. There may be alternative versions of this product, please contact us should you require this information.

IMPORTANT: No liability is accepted for incorrect use of product. Spare parts must be fitted by a competent person

WARRANTY: Guarantee is 12 months from purchase date, proof of which will be required for any claim.

Sealey Group, Kempson Way, Suffolk Business Park, Bury St Edmunds, Suffolk. IP32 7AR



01284 757500



sales@sealey.co.uk



www.sealey.co.uk